

Protecting Water Quality

... at Construction Sites

It's Everyone's Responsibility

Silt Fencing

- ◆ Inspect and maintain silt fences after each rainstorm.
- ◆ Make sure the bottom of the silt fence is buried in the ground.
- ◆ Securely attach the material to the stakes.
- ◆ Don't place silt fences in the middle of a waterway or use them as a check dam.
- ◆ Make sure that stormwater is not flowing around the silt fence.



Bad

Construction Phasing



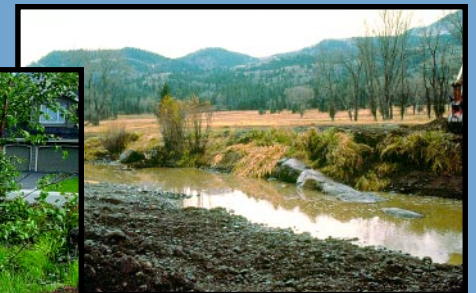
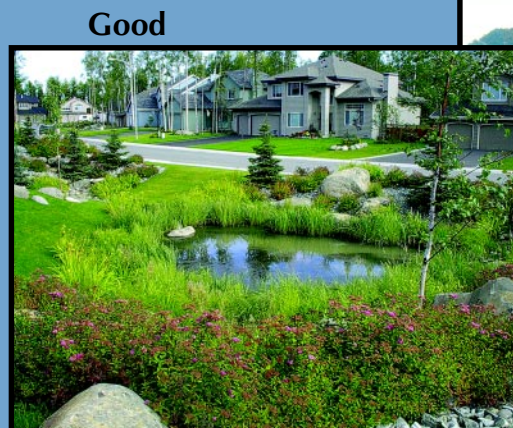
Bad



- ◆ Sequence construction activity so that the soil is not exposed for long periods of time.
- ◆ Install sediment controls before site grading begins.
- ◆ Schedule site stabilization, such as landscaping, to begin as soon as the site has been graded to its final contour.

Vegetative Buffers

- ◆ Protect and install vegetative buffers along waterbodies to slow and filter stormwater runoff.
- ◆ Maintain buffers periodically to ensure their effectiveness.



Bad

Storm Drain Inlet Protection

- ◆ Use rock or other appropriate material to cover the storm drain inlet to filter out trash and debris.
- ◆ Make sure the rock size is appropriate (usually 1 to 2 inches in diameter).
- ◆ If you use inlet filters, maintain them regularly.

Good



Bad

Construction Entrances



Bad

Good



- ◆ Remove mud and dirt from tires of construction vehicles before they enter a paved roadway.
- ◆ Properly size entrance BMPs for all anticipated vehicles.
- ◆ Make sure that the construction entrance does not become buried in soil.

Protect Natural Features

- ◆ Minimize clearing.
- ◆ Minimize the amount of exposed soil.
- ◆ Identify and protect areas where existing vegetation, such as trees, will not be disturbed by construction activity.

Good



Bad

Contact your local government for details.

City of Archdale
(336) 431-9141

Guilford County
(336) 641-3334

Town of Lewisville
(336) 945-5558

Randolph County
(336) 318-6555

Village of Clemmons
(336) 766-9170

City of High Point
(336) 883-3111

Piedmont Triad
Water Quality
Partnership

Piedmont Triad
Regional
Water Authority
(336) 547-8437

Town of Rural Hall
(336) 969-6856

Forsyth County
(336) 727-2087

Town of Jamestown
(336) 454-1138



City of Randleman
(336) 495-7500

Town of Walkertown
(336) 595-4212

City of Greensboro
(336) 373-2812

Town of Kernersville
(336) 996-3121

City of Winston-Salem
(336) 747-7480

www.piedmontwaterquality.org